

LOWER NEHALEM COMMUNITY TRUST

beading the necklace of people and place



Winter 2015 Newsletter

Welcome Home, Nature Park & Sorrel Woods!

Nature Park Newest Community Gem

What happens when a land trust, a city, conservation-minded donors, and a state agency root for conservation? A 9-acre nature park, of course!

Last year Lower Nehalem Community Trust and the City of Manzanita won a grant from Oregon Parks and Recreation

Department to acquire land in a “bargain sale” from donors Dave and Toni Clay. Blacktail Ridge, 4.6 acres of the nine acre park, was donated by Teevin Investment Company.

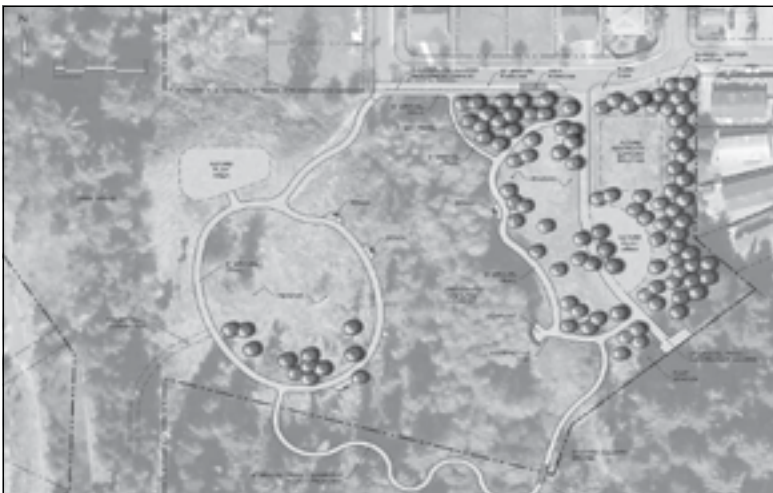
“We plan a park that invites people to explore the area.”

Jerry Taylor

LNCT facilitated transfer, to the city of the donation, which was used as part of the grant match. “This natural area park will protect an important wildlife corridor from Nehalem Bay State Park to the Trust’s properties along Nehalem Bay, and at the same time the city gains a new neighborhood park,” said Nancy Chase, an LNCT Board member who wrote the winning grant.

Manzanita City Council will consider approval of the park development plan (see rendering) at its February 4 meeting. City Manager Jerry Taylor explained, “The city council recognized the value of this particular property for community use. We plan a park that invites people to explore the area.”

Rendering of Manzanita Nature Park
J.D. Walsh & Associates, P.S. - Landscape Architects



Sorrel Woods Extends Alder Creek Farm and Natural Area

“Alder Creek Farm is a showcase,” says Judy Sorrel. “With our outreach to the community through teachers like Peter Walczak, the community makes connections to the Farm. I want to make the Farm even more accessible and see the education opportunities continue to grow.”

When Judy Sorrel recently donated nearly five acres of riparian meadow and forested uplands on the eastside of Alder Creek, she explained, “I always envisioned it as part of the Farm.” A Trust founder, Judy has distinguished herself as a tireless volunteer and generous champion of conservation. Her donated parcel, called Sorrel Woods, includes a critical easement allowing access from Nehalem’s 13th Street to Alder Creek Farm.

Sorrel Woods extends the new ethnobotanical Nehalem Teaching Trail across Alder Creek. “Sorrel Woods,” explains Trust founder Doug Firstbrook, “is where the teaching trail becomes a *learning* trail.” Just cross a new bridge, and you’ll see what he means: a wild kingdom of hemlock, elk trails and bedding areas, festoons of sedges and rushes, elderberry, and hawks circling slowly above your head await you.

With Judy’s restoration efforts and her enduring connection to the land, LNCT sees a partnership tailor-made for the benefit of all species. “It’s so nice to know there will be energy to continue stewardship,” agrees Judy.



Glimpse of Sorrel Woods from Alder Creek Farm *photo by Max Broderick*

From the Director

Grassy Lake, Gods Valley, Cougar, Fall, Soapstone, Pearl, Sweet Home, Spruce Run, Lost...recite these names out loud and you hear poetry in the creeks of our 220 square mile service area. These running waters, so vital to healthy ecosystems, are lifelines connecting land to wide-open ocean.



And community is another lifeline vital to healthy ecosystems. Our founders' charge to be a *community* trust is one we take to heart. As a result we are not your average land trust. Work at Alder Creek Farm showcases approaches to conservation with community at its center. Our Community Garden feeds families, Forest to Sea Day Camp introduces children to the natural world, and volunteer-led land restoration protects important habitats while teaching conservation values.

Inside you'll find stories of how together we're making a lasting difference. Join us.

Executive Director

Thank You Funders

With gratitude for your vision & generosity

Foundations

Campbell Family Charitable Fund
Natural Resources Conservation Service
Oregon Community Foundation
YARG Foundation and Land Trust Alliance Oregon

Business Champion

Unfurl ~ Planet-Forward Fashion for Women and Men

Cedar Circle

Anonymous (2)	Kim Miller & Michael Hithe
Nancy Ashton & Dennis Schantzen	Ann Morgan
Georgenne & Gareth Ferdun	Peter Nunn
Victoria Holt & Jeremy Sappington	Madeline & Allan Olson
Katherine & Gordon Keane	Kathleen & Larry Remmers
Dottie Koontz	Melinda & Gary Seelig
Joan & Daniel Kvitka	Judy Sorrel
Olivia Mercado	Kim & Henry Stevens
Melody Meyers	Paul Sunderland

Special Thanks

Dave & Toni Clay
Diane Gibson & Patty Rinehart
Celeste Lebo, Kevin Staley & Columbia River Youth Corps
Mary McGuinness & her Wilson River School Students
David Nestor, Jason Jones & Northwest Youth Corps
Dan Spotskey
Teevin Investment Company

Beading People & Place

New Board Members

Casey Storey is an Environmental Coordinator and Biologist at Native Alaska-owned WHPacific, Inc. with extensive background in fisheries science, wetland restoration, and rare plant preservation. "I continue to discover that the Trust embodies my educational and professional interests in sustainable agriculture, ecology, conservation, and sustainable communities," said Casey who is also a coffee roaster and potter.

Jeremy Sappington divides his time between Vashon Island and Manzanita. He earned his Certificate in Wetlands Management at the University of Washington and is a gifted facilitator and professor. "I really believe that the Northwest Coast is the most beautiful on the planet, and I feel strongly about working to protect and restore these ecosystems," he explains.

Ed Gallagher is a Senior Fellow at Portland State University's Center for Public Service. "Our community has a great history of volunteerism and people stepping up with ideas to make the community a better place," said Ed who was Gresham's Director of Community and Economic Development and is a Phi Beta Kappa alumnus of the University of Oregon where he earned his MPA.

Nancy Chase lives in Falcon Cove and Portland. She first joined the board in May 2006 and returned last June. With a degree in landscape architecture from Washington State University, Nancy spent her career leading the preservation of parks and natural areas in Portland Metro and has served on preservation projects across the nation. "I love the Oregon coast, and I want to help preserve its scenic beauty and wildlife values," said Nancy.

Welcome Mary

LNCT's new Office Manager, **Mary Corey**, recently moved to Wheeler when she joined the Trust. She reports, "I feel very at home here and enjoy the people and energy in our communities." Last May Mary completed her degree *magna cum laude* in Environmental Studies & Sustainable Design at Pacific University, and previously she worked as an illustrator and graphic designer. Applying her design background and her fascination with natural systems, Mary is eager to integrate her talents to promote and support the wellbeing of the natural world.



Thank you, Jill!

We wish **Jill Thurston**, who joined LNCT as its first office assistant in 2012, all the best in her new endeavors. The Trust is grateful for her good cheer, dedication, and creation of warm community connections.

Nehalem Teaching Trail: A Vision Takes Root



photos by Gary Seelig

A newly installed split cedar rail fence greets visitors at the entrance to Alder Creek Farm. It's a sign of the summer's intense work to realize the Nehalem Teaching Trail vision: a hands-on learning experience that invites audiences to investigate native plants, their habitats, and the ancient Indian traditions surrounding their uses.

Follow the trail and you will discover footbridges crossing both Alder Creek and a wetlands of sedges and rushes for basket weaving, wooden gates of wondrous craftsmanship, a rocky peak habitat, and soft, wood-chipped trails under foot.

"We were alive in the land of possibilities..."

Doug Firstbrook

For founding board members Vivi Tallman and Doug Firstbrook, the teaching trail idea grew out of early conversations with scholar and ethnobotanist, Douglas Deur, Ph.D. "Education oriented from its very beginning, the Trust's board readily embraced the notion," said Doug Firstbrook whose tireless leadership energized the trail's build-out over the summer. "There are many diverse ecosystems present on this 55 acres of land," he added. "We were alive in the land of possibilities, so a trail based on the regional flora with the opportunity to learn their historical and cultural significances seemed like a natural next step that would benefit the entire community."

In 2008 Doug Deur developed what would become the Nehalem Teaching Trail codex, a 20-page overview of indigenous plants that interpret the Nehalem region's ethnobotany (scientific study of the relationships between peoples and plants). A research professor at Portland State University, Dr. Deur serves as cultural ecologist for American tribes. He co-edited *Keeping It Living*, about Pacific Northwest Native American plant traditions, and

published *Pacific Northwest Foraging* (Timber Press, 2014), a New York Times best seller.

Although conservation easements restrict the use of much of Alder Creek Farm's land, with Judy Sorrel's recent donation of Sorrel Woods, now more than 9 unrestricted acres are available outside the conservation easements. The riparian meadow and more wild, forested uplands of Sorrel Woods offer opportunities to seamlessly extend the trail with increasing degrees of meander and the benefits of beautiful, scenic overlooks.

Next steps include seeking funding to create interpretative signs and a companion brochure. "This is not a hiking trail," said Doug, "it's a learning experience. It's about the greater community taking what they learn about plants and habitats and then using it for a greater purpose and connection to our land."

* * *

So many have generously and selflessly supported the Nehalem Teaching Trail.

Thank you donors, volunteers, craftsmen, contractors, landscape architects, botanists, community partners.

Phil Blanton
Lynda Chick
Douglas Deur
John Dube
Tony Erickson
Doug Firstbrook
Ida Gianopulos
Monica Gianopulos
Chip Hall
Michael Hithe
Maia Holliday
Judith Jones
Celeste Lebo
Mark Lemley
John Longfellow
Don Mackie
Craig Mackie
Barry Marshall
Richard Mastenik
Olivia Mercado

Devon Mersereau
Lori Mersereau
Erich Miller
Kim Miller
Bruce Phillips
Doug Ray
Barbara Rippey
Gary Seelig
Judy Sorrel
Kevin Staley &
Columbia River Youth Corps
Vivi Tallman
Tillamook County
Cultural Coalition
Tillamook Peoples
Utility District
Scott Wagner
Weyerhaeuser & Jay Holland
Chuck Zwissler



photos by Max Broderick and Doug Firstbrook



Both Community & Garden Grow

The Community Garden at Alder Creek Farm celebrated record-breaking food production in 2014. Not only did gardeners fill their baskets with harvest, but they also shared a record 2,580 pounds of fresh, picked-that-day fruits, vegetables, and herbs with families served by the North County Food Bank. **Thank you, Community Gardeners!**

“Our harvest day coincides with the food bank’s day, so we offer the freshest and most nutritious produce possible,” said Community Garden Coordinator Karen Matthews. Growing fresh, organic produce is our guiding spirit, and we are committed to enlarging access to good food in our community.

The Trust received a three-year grant from the YARG Foundation and Land Trust Alliance Oregon to support a new seasonal garden manager. We are thrilled to announce Karen will continue in her role, but no longer as a volunteer. Karen’s gifts and commitment to the garden have long been the not-so-secret ingredient in our recipe for success. And if you’ve ever seen how small children delight her, then you know why she’s the perfect person to lead us into the future. Welcome home, Karen!

Save The Date

Saturday, April 25
Annual Spring Plant Sale!

The Community Garden makes us fall in love all over again with the exhilaration of working outdoors, the reward of growing food that tastes good, the pleasures of garden camaraderie, and the joys of quiet, early mornings at the Farm. For Karen, a Master Gardener, education and learning gardening techniques are also important. To adapt an old proverb, “Share your harvest with neighbors and they eat for a day; teach them to garden and they eat for a lifetime.”

The garden’s expanding role as a community, environmental, and educational resource create so many opportunities. Practicing and teaching organic gardening protect and preserve the land for generations to come. And because the

garden is intricately linked to Alder Creek Farm’s ecosystem, the mandate of environmentally friendly gardening is ever-present.

In a time when our connection to the land is threatened, a place like the garden takes on new and more urgent meaning. As an outdoor classroom, it’s a successful experiment in sustainable food systems, community development, and environmental stewardship. Schoolchildren come from as far away as Medford and Portland and as nearby as Nehalem and Tillamook to experience their first taste of gardening.



Why not stop by and visit the garden? Walk through the garden gate, say “hello” to the ducks, nibble a bite of kale in the permaculture garden, scan the horizon for elk ~ does our desire for nature ever abandon us?

Help to keep the ducks safe...don't forget to latch the gate!

We are accepting applications...

2015 garden season
Opening day is
Saturday, February 28

For More Information

Visit www.nehalemtrust.org
E-mail karen@nehalemtrust.org
Call (503) 368-3203

* * *

“Share your harvest with neighbors and they eat for a day; teach them to garden and they eat for a lifetime.”

Winter 2015

Mission

To preserve land and nurture conservation values in partnership with an engaged community in the Nehalem region of the Oregon Coast.

Board of Directors

Allan Olson
Chair

Ed Gallagher
Treasurer

David Sip
Secretary

Nancy Chase

Monica Gianopulos

Jeremy Sappington

Casey Storey

Staff

Dale Cramer Burr
Executive Director
dale@nehalemtrust.org

Max Broderick
Stewardship Coordinator
max@nehalemtrust.org

Karen Matthews
Community Garden Coordinator
karen@nehalemtrust.org

Mary Corey
Office Manager
mary@nehalemtrust.org

Laura Swanson
Guest Newsletter Contributor

Lower Nehalem Community Trust

Box 496
532 Laneda Avenue, Suite C
Manzanita, OR 97130-0496
(503) 368-3203
lnct@nehalemtrust.org
www.nehalemtrust.org

Alder Creek Farm Hosts Forest to Sea Day Camp



photos by Gary Seelig

For 16 years, local educator and marine biologist Peter Walczak has delighted and enchanted children with his Forest to Sea day camps. In 2014, for the first time Lower Nehalem Community Trust hosted Peter and a group of twenty-two 2nd – 5th grade campers at Alder Creek Farm. Gary Seelig worked closely with Peter coordinating the camp, while Raine

Siegal, Charlie Wooldridge, and Dr. Karin Walczak led various art workshops. Camp counselors were Roan Childress and Matthew Grimes.

The Farm's varied ecosystems inspire a wide range of activities for campers, and last summer they went on field trips to Oswald West and Nehalem Bay State Parks, too. Days were filled with hikes, writing and illustrating their own journals, exploring, games, science lessons, beach play time, learning about organic gardening (and eating greens for lunch!), and art. "It's a wonderful setting for the camp," said Peter. "The barn and greenhouse allow campers to be in an environment with nature around them, yet also have work space for quiet, focused time."

Juan Young Trust and the Eugene Schmuck Foundation generously funded this new project. And the Grub Club team provided lunches and snacks for campers. One grandparent exclaimed about her grandchild's experience, "This was the highlight of her summer. She could have done a whole summer at Alder Creek Farm!"

The Trust is readying grant requests to support another Forest to Sea Day Camp at Alder Creek Farm. Pencil in the week of June 22 – 26, 2015, and look for announcements in our e-Bulletin and at local schools!

Stewardship Corner by Max Broderick



Max Broderick

As Stewardship Coordinator I am privileged to work with volunteers, partner organizations, and a dedicated staff in the important work of conservation. With 2015 in full swing, Lower Nehalem Community Trust has many opportunities to enhance, restore, and protect our vibrant natural landscape.

This year we'll focus on getting native shrub and scrub vegetation established at Zimmerman Marsh to cultivate a more diverse and functioning habitat. This will entail regular workdays to plant and cage shrubs, keep invasive species such as scotch broom and Eurasian blackberry in check, and monitor our progress. We'll also be working at Vosburg Creek to monitor stream quality and plant conifers along the riparian corridor, and planting native wetland grasses around the pond at Alder Creek Farm to diversify the plant community.

I've written a grant with our partner Lower Nehalem Watershed Council to fund a large-scale restoration project at Cedar Creek. If we secure this funding, the project will include invasive species removal, native planting, and fencing. This project's success will create valuable habitat for aquatic, avian, and terrestrial critters. Since it will take considerable effort to implement these restoration measures, we hope to have neighbors and volunteers involved in our work.

It's always fun to orient new stewardship volunteers, to join us email max@nehalemtrust.org

Garden Gets New Irrigation System



Dan Spotskey

Year after year during dry summer months, keeping our community garden watered required flinty resourcefulness. Our Alder Creek water rights and the Farm's 100,000 gallon rainwater cistern have figured prominently. As the garden expanded to its current footprint, so grew our water demands. Running to keep up with global warming, we saw the writing on the wall: time for a sustainable solution.

Thanks to a team led by volunteer, Dan Spotskey, there is a new irrigation system that saves time and makes watering more efficient. With the help of many Dan installed a sandpoint well, which he linked to the catchment tank and electronically controlled soaker hoses.

A sandpoint well taps surface groundwater perched atop a layer of sand. Nutrient collecting rain and irrigation water filter through the garden's healthy soil and get recycled to irrigate crops again and again. With automatic settings, watering is scheduled during early mornings hours. Not only is just the right amount of water delivered, but also gardeners no longer spend hours hand-watering. Later this year a fire hose hook-up nozzle will be installed so the cistern also serves as a fire suppression resource.

Thanks to Dan, our Community Gardeners who helped fund this project, and the hundreds of volunteer hours spent on design and installation!

Nominate Your Local Conservation Hero

You are invited and encouraged to submit your 2015 Ferdun Conservation Award nomination for the individual who has made extraordinary contributions to conservation in the Nehalem region of the Oregon Coast. The award is named after Georgette and Gareth Ferdun who helped found Lower Nehalem Community Trust and have passionately pursued land preservation and habitat restoration in our region.

We are blessed to live in an environmentally conscious community with many people supporting local conservation. By recognizing the exemplary work of individuals, the Trust hopes to bring attention to the important and diverse work being done in our area.

Nominations are due March 31 and must include (not to exceed one page in length):

1. Your name and contact information
2. Your nominee's name and contact information
3. A brief essay on how your local conservation hero has contributed to the preservation of land or nurturing of conservation values in the Nehalem region of the Oregon Coast.

Please mail your nomination to LNCT, Box 496, Manzanita, OR 97130-0496 or email lnct@nehalemtrust.org with Ferdun Conservation Award in the subject line. LNCT's board of directors will select the winner, and the award will be bestowed at the Living Locally Gala & Auction on Saturday, June 6.

Employees of Lower Nehalem Community Trust and current Lower Nehalem Community Trust board members are not eligible.



Educator, naturalist, wildlife photographer, and North Coast Land Conservancy founder Neal Maine was last year's Ferdun Conservation Award winner.

photos by Neal Maine

Thank you board of directors, donors, volunteers, staff, and partners ~ you are the bedrock and inspiration of all that we do!

May our circle grow and our work together conserve more and more of our region and its wildlife habitats.

Save The Date June 6, 2015



8th Annual Gala & Auction

Join Us in Thanking Our Business Members

Unfurl Clothing	Longevity Massage
Ecologic Tree, LLC	Blanton & Son Construction, LLC
Sarah Smyth McIntosh Law Manzanita	Finnersterre
Columbia Bank	Weichert Wellness, LLC
Manzanita Rental Company	Nehalem Bay Pottery
Hahn and Associates, Inc.	Hans Tonjes - Real Estate Broker
Diane Kay Gibson, CPA	The Pizza Garden
One Green World	Rinehart Clinic
Cloud & Leaf Bookstore	Blackbird

Learn more about the many benefits associated with Business membership by contacting us at (503) 368-3203.

Saturday, March 7th

2015 Nehalem Bay & Estuary Cleanup

Grab yer wellies...

and join us for a day of treasure hunting, debris collecting, hauling, and sorting ~ **Woo Hoo!**

Thanks to our community partners:

- Lower Nehalem Watershed Council
- CARTM
- North Coast Land Conservancy

Meet at the Wheeler Waterfront Park, 7:30 a.m.

Celebration, feast & live music
Tsunami Bar & Grill, 3:30 p.m.

If you'd like to help with planning, logistics or be a lead at the event, email max@nehalemtrust.org.